

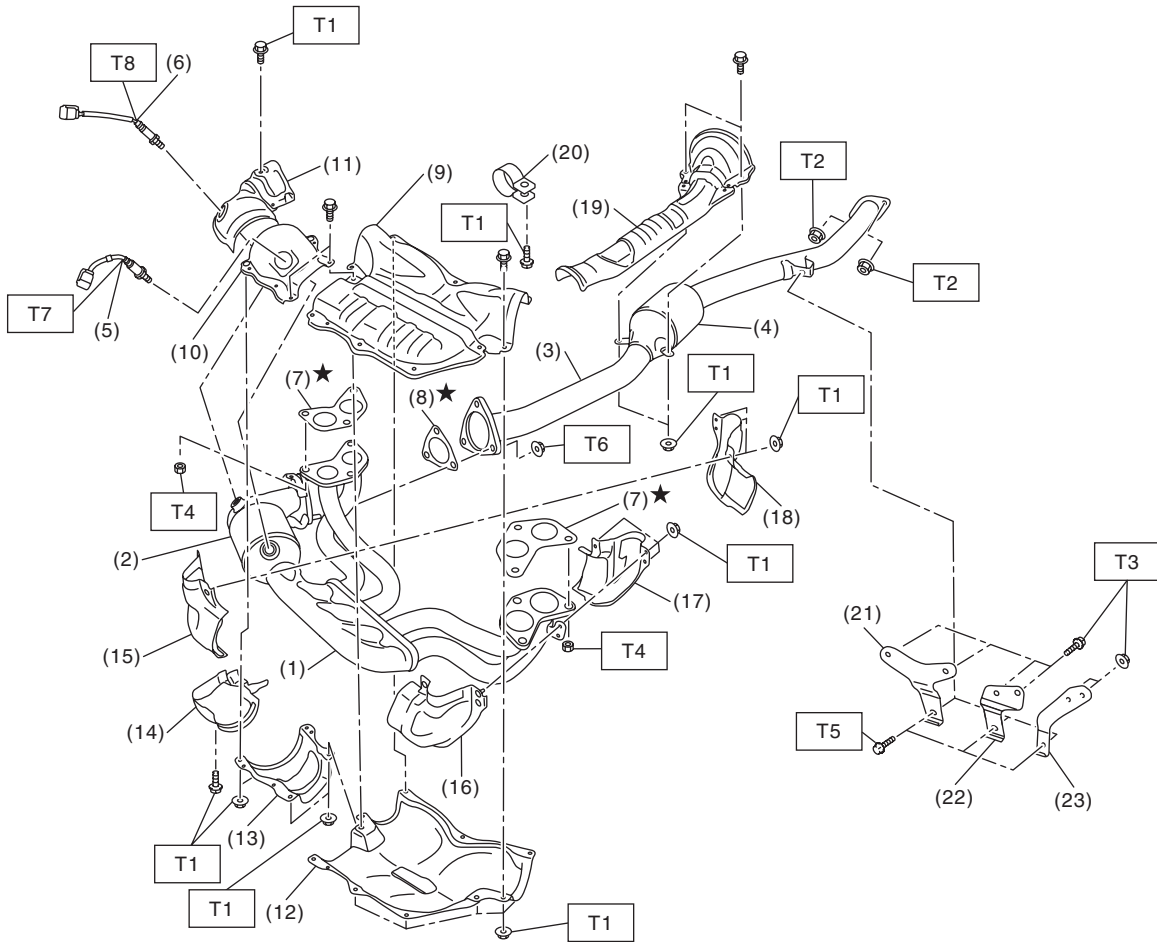
General Description

EXHAUST

1. General Description

A: COMPONENT

1. FRONT EXHAUST PIPE AND CENTER EXHAUST PIPE



EX-03285

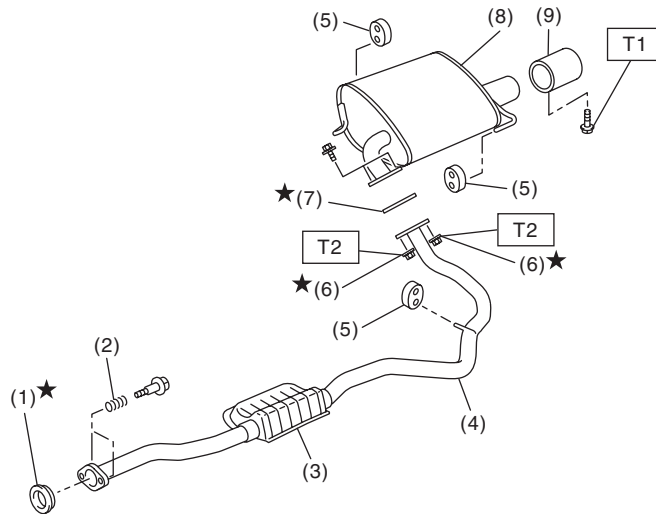
General Description

EXHAUST

(1) Front exhaust pipe	(12) Front exhaust pipe lower cover	(23) Hanger bracket (MT model)
(2) Front catalytic converter	(13) Front catalytic converter lower cover LH	
(3) Center exhaust pipe	(14) Front catalytic converter lower cover RH	Tightening torque: N·m (kgf-m, ft-lb)
(4) Rear catalytic converter	(15) Front exhaust pipe side cover RH (front)	T1: 13 (1.3, 9.6)
(5) Front oxygen (A/F) sensor	(16) Front exhaust pipe side cover LH (front)	T2: 18 (1.8, 13.3)
(6) Rear oxygen sensor	(17) Front exhaust pipe side cover LH (rear)	T3: 23 (2.3, 17.0)
(7) Gasket	(18) Front exhaust pipe side cover RH (rear)	T4: 30 (3.1, 22.1)
(8) Gasket	(19) Center exhaust pipe upper cover	T5: 35 (3.6, 25.8)
(9) Front exhaust pipe upper cover	(20) Band	T6: 42.5 (4.3, 31.3)
(10) Front catalytic converter upper cover LH	(21) Hanger bracket (HEV model)	T7: <Ref. to FU(H4DO(w/o HEV))-93, INSTALLATION, Front Oxygen (A/F) Sensor.> <Ref. to FU(H4DO(HEV))-80, INSTALLATION, Front Oxygen (A/F) Sensor.>
(11) Front catalytic converter upper cover RH	(22) Hanger bracket (gasoline engine CVT model)	T8: <Ref. to FU(H4DO(w/o HEV))-97, INSTALLATION, Rear Oxygen Sensor.> <Ref. to FU(H4DO(HEV))-83, INSTALLATION, Rear Oxygen Sensor.>

2. REAR EXHAUST PIPE AND MUFFLER

- 4 door model



EX-02792

(1) Gasket	(6) Self-locking nut
(2) Spring	(7) Gasket
(3) Chamber	(8) Muffler
(4) Rear exhaust pipe	(9) Muffler cutter (models with muffler cutter)
(5) Cushion rubber	

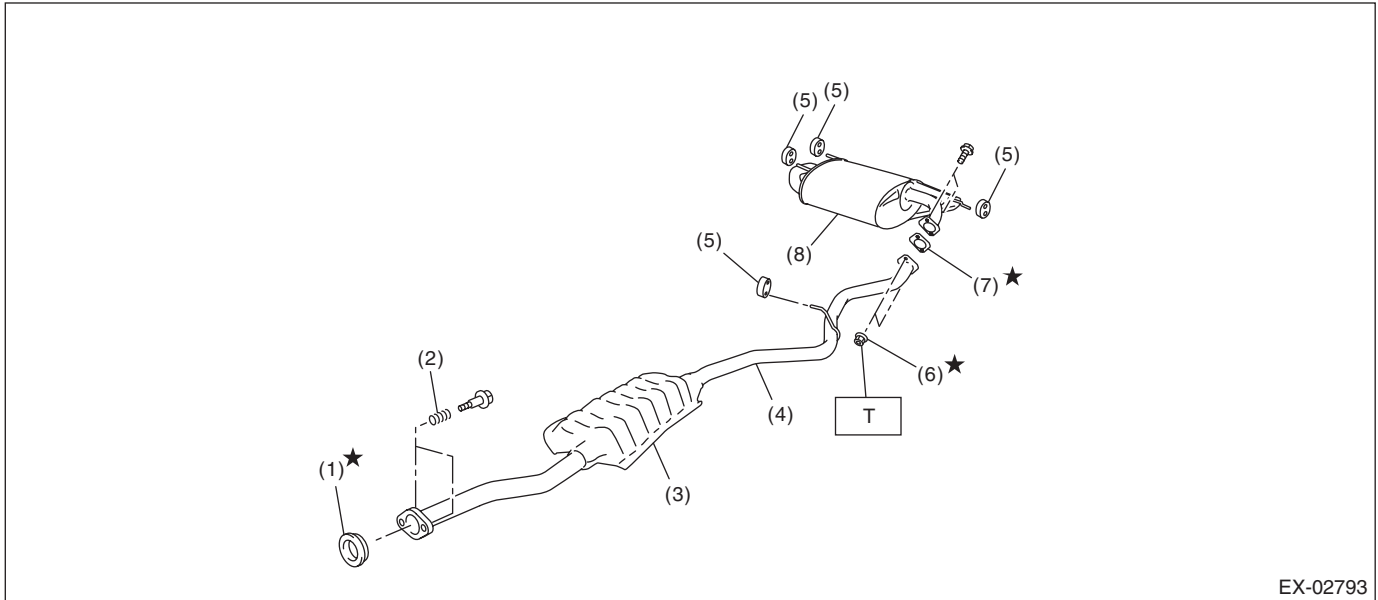
Tightening torque: N·m (kgf-m, ft-lb)
T1: 7.5 (0.8, 5.5)
T2: 48 (4.9, 35.4)

EX(H4DO(w/o HEV))-3

General Description

EXHAUST

- 5 door model

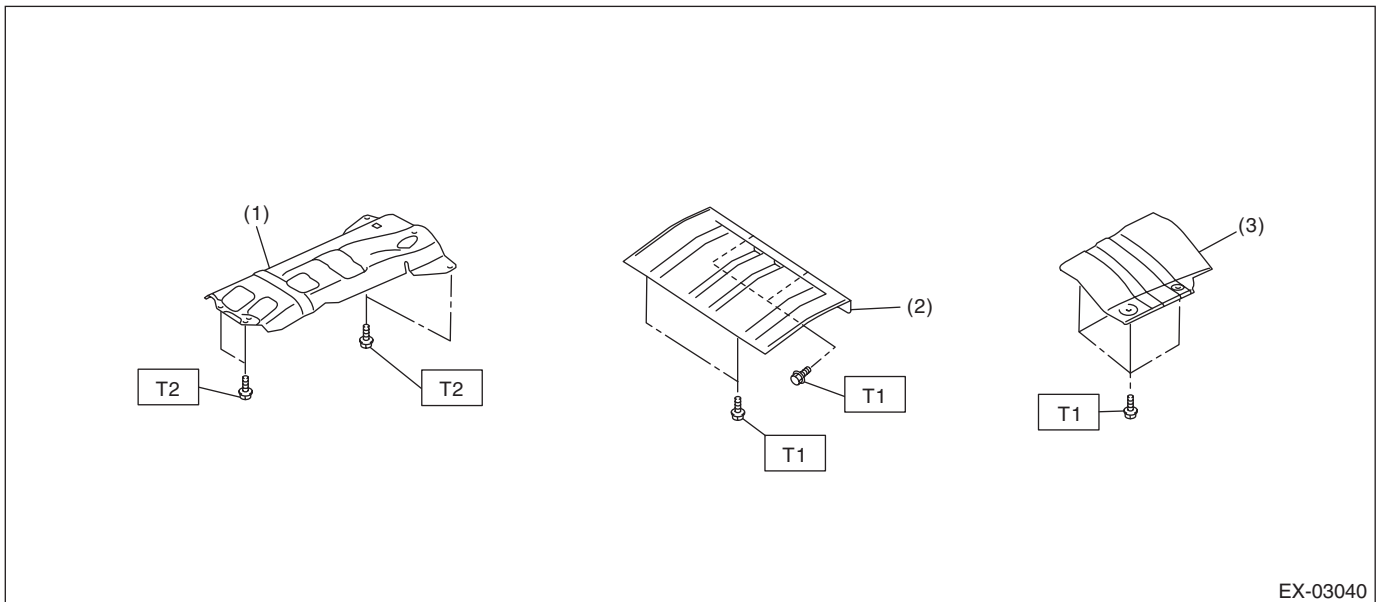


- | | |
|-----------------------|----------------------|
| (1) Gasket | (5) Cushion rubber |
| (2) Spring | (6) Self-locking nut |
| (3) Chamber | (7) Gasket |
| (4) Rear exhaust pipe | (8) Muffler |

Tightening torque: N·m (kgf-m, ft-lb)

T: 48 (4.9, 35.4)

3. HEAT SHIELD COVER



- | | |
|---------------------------------------|---------------------------------------|
| (1) Center exhaust cover | (3) Rear exhaust cover (4 door model) |
| (2) Rear exhaust cover (5 door model) | |

Tightening torque: N·m (kgf-m, ft-lb)

T1: 10 (1.0, 7.4)

T2: 18 (1.8, 13.3)

B: CAUTION

- Prior to starting work, pay special attention to the following:
 1. Always wear work clothes, a work cap, and protective shoes. Additionally, wear a helmet, protective goggles, etc. if necessary.
 2. Protect the vehicle using a seat cover, fender cover, etc.
 3. Prepare the service tools, clean cloth, containers to catch grease and oil, etc.
- Vehicle components are extremely hot immediately after driving. Be wary of receiving burns from heated parts.
- When performing a repair, identify the cause of trouble and avoid unnecessary removal, disassembly and replacement.
- Before disconnecting connectors of sensors or units, be sure to disconnect the ground cable from battery.
- Always use the jack-up point when the shop jacks or rigid racks are used to support the vehicle.
- Remove contamination including dirt and corrosion before removal, installation, disassembly or assembly.
- Keep the removed parts in order and protect them from dust and dirt.
- All removed parts, if to be reused, should be reinstalled in the original positions with attention to the correct directions, etc.
- Bolts, nuts and washers should be replaced with new parts as required.
- Be sure to tighten the fasteners including bolts and nuts to the specified torque.
- If any grease adheres to the exhaust pipe, wipe it off. Otherwise a fire may happen.